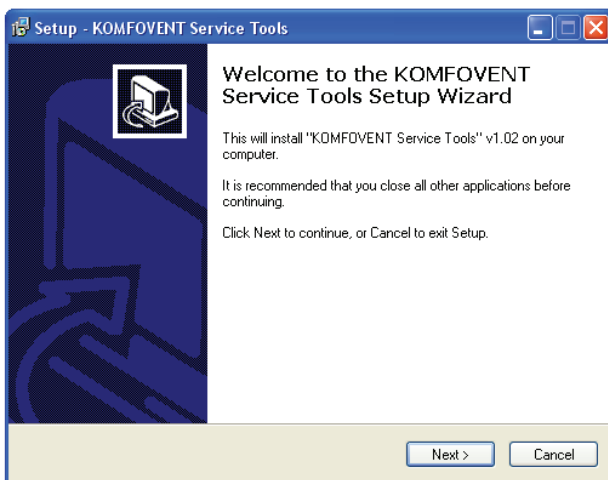


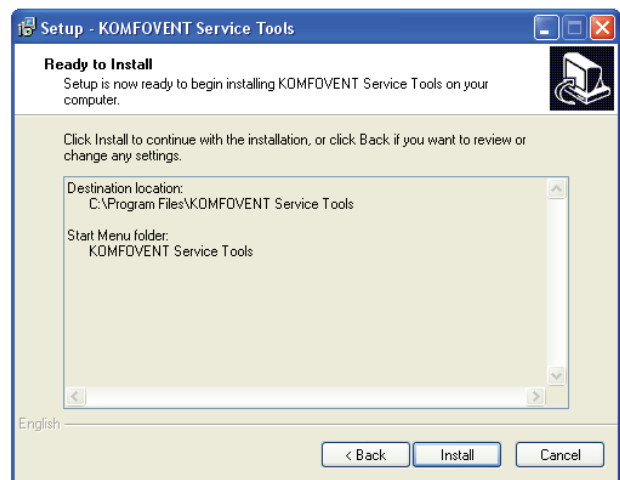


KOMFOVENT Service Tools Installation Manual

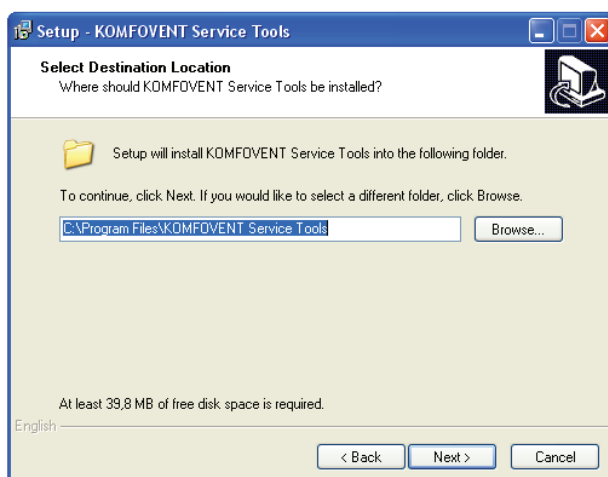
- 1 Run the KTS_setup.EXE file and follow displayed instructions.



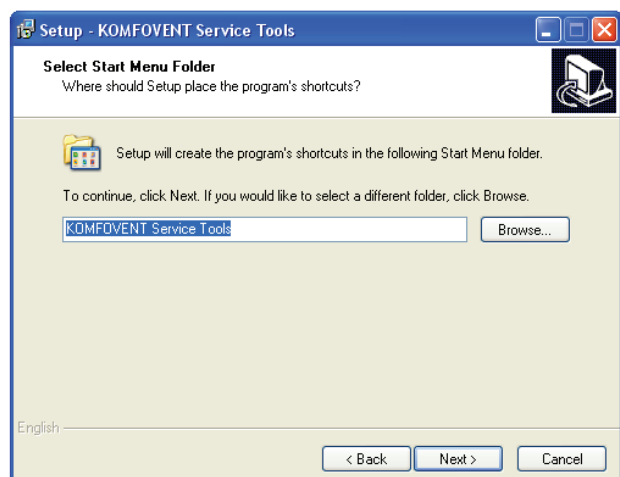
- 3 Select Start Menu Folder.



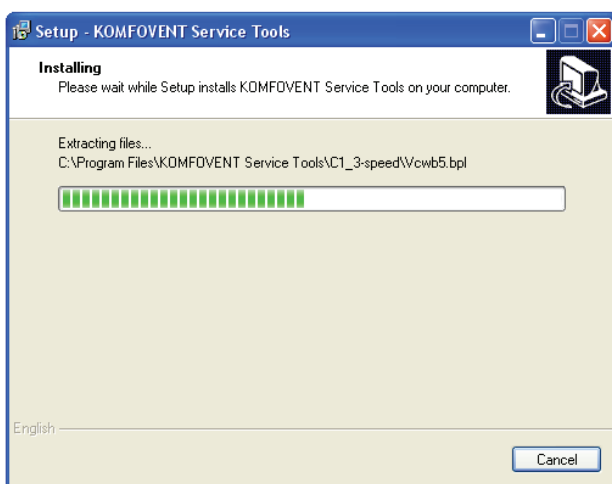
- 2 Select your destination folder.



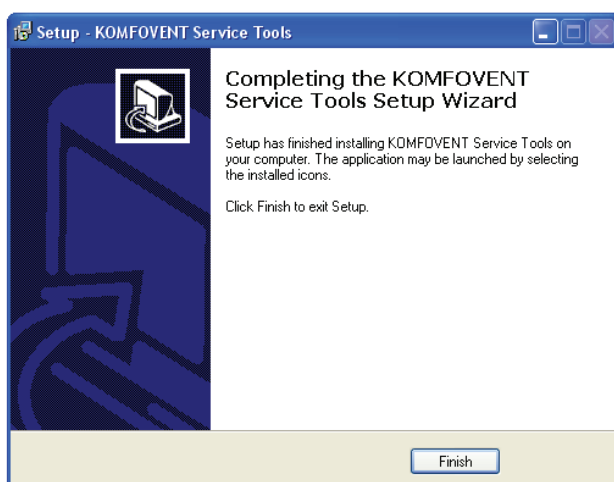
- 4 Press install button to start the installation.



- 5 Please wait while the setup finishes.

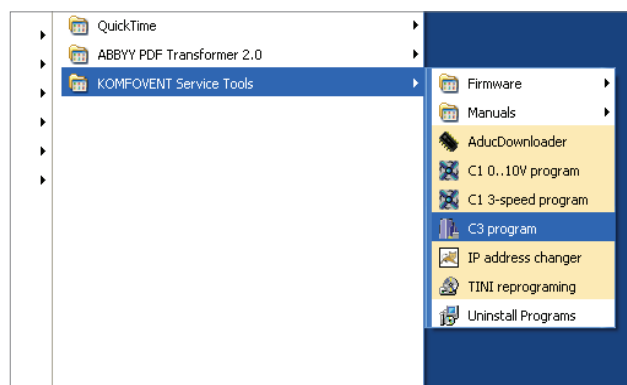


- 6 Press Finish to complete the installation wizard.

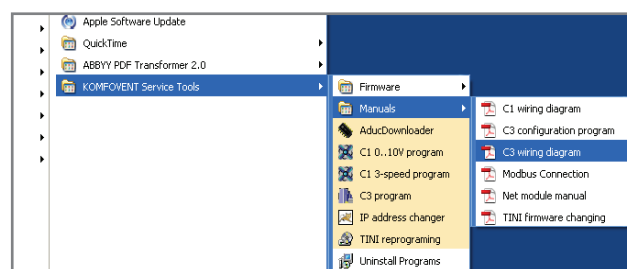


- 7 KOMFOVENT SERVICE TOOLS can be found in the START menu:

START->ALL PROGRAMS->
KOMFOVENT Service Tools



- 8 To get the latest firmware for KOMFOVENT controllers use the link GET NEW FIRMWARE.



- 9 For more information the necessarily manuals are included.

